



Liesel

SIZE

One size fits all.

YARN

1 ball TLC *Cara Mia* (50% Acrylic, 19% Nylon, 18% Rayon, 13% Angora; 3½ oz; approximately 210 yd) in 2205 Melon.

NEEDLES

US8 / 5 mm. *Adjust needle size to obtain correct gauge.*

GAUGE

35 sts (edge sts + charted pattern) = 6½" / 16.5 cm.

To save time and ensure accurate sizing, check gauge.

REQUIRED SKILLS

Decreases, increases.

It's time to use those single skeins! Set aside a few hours every day and knit yourself an elegant lace scarf in a week. The elm leaf motif is easy to memorize. ☹ This is a good exercise in working "knitted lace", which is worked on both right and wrong sides. ☹ The beauty of Liesel is that it can be knit in a variety of yarn weights. Select dk, worsted, or chunky for a very contemporary look; for a classic look, use a lace- or sport weight yarn. Either way you'll have yourself a lovely lace scarf that can be worn throughout the year. ☹ See next page for pattern variations.

SCARF

Cast on 35 sts. Knit 4 rows of garter st.

Work in pattern (written instructions below; chart on the next page), remembering to knit 2 edge sts at the beginning and end of each row, until you have about 4 yards of yarn left. Make sure to knit a full 10 rows of the pattern.

Knit 4 rows of garter st.

Cast off. Block.

ELM LEAF PATTERN

Note: "[...] 2 times" indicates that you must knit the sequence within the brackets twice.

Row 1 (RS): K 2 edge sts, [k1, yo, k1, ssk, p1, k2tog, k1, yo, p1, ssk, p1, k2tog, yo, k1, yo] 2 times, k1, K 2 edge sts.

Row 2 (WS): K 2 edge sts, p1, [p4, k1, p1, k1, p3, k1, p4] 2 times, K 2 edge sts.

Row 3 (RS): K 2 edge sts, [k1, yo, k1, ssk, p1, k2tog, k1, p1, s2kpo, yo, k3, yo] 2 times, k1, K 2 edge sts.

Row 4 (WS): K 2 edge sts, p1, [p6, k1, p2, k1, p4] 2 times, K 2 edge sts.

Row 5 (RS): K 2 edge sts, [k1, yo, k1, yo, ssk, p1, k2tog, k2tog, yo, k5, yo] 2 times, k1, K 2 edge sts.

Row 6 (WS): K 2 edge sts, p1, [p7, k1, p1, k1, p5] 2 times, K 2 edge sts.

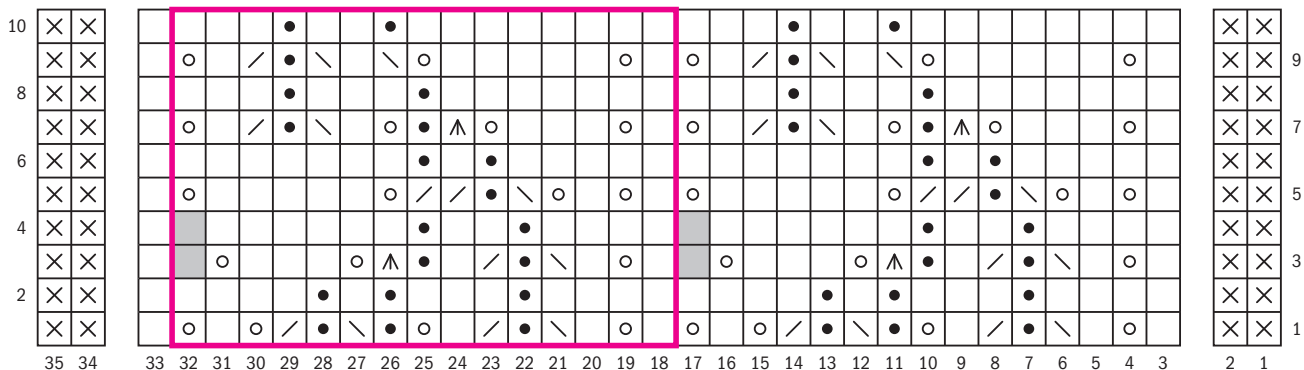
Row 7 (RS): K 2 edge sts, [k1, yo, k3, yo, s2kpo, p1, yo, k1, ssk, p1, k2tog, k1, yo] 2 times, k1, K 2 edge sts.

Row 8 (WS): K 2 edge sts, p1, [p3, k1, p3, k1, p7] 2 times, K 2 edge sts.

Row 9 (RS): K 2 edge sts, [k1, yo, k5, yo, ssk, k1, ssk, p1, k2tog, k1, yo] 2 times, k1, K 2 edge sts.

Row 10 (WS): K 2 edge sts, p1, [p3, k1, p2, k1, p8], K 2 edge sts.

Elm Leaf Pattern (multiple of 15 sts + 1)



	pattern repeat		k on the RS and the WS		yo		ssk
	no stitch		k on the RS, p on the WS		s2kpo		k2tog
			p on the RS, k on the WS				

PATTERN VARIATIONS

Multiple Repeats: Add or subtract pattern repeats to make Liesel as narrow or wide as you like. Make it wide, make it a stole.

Mirror Image 1: Make a mirror image copy the pattern repeat. Use this mirror image as stitches 18–32 instead.

Mirror Image 2: Use the mirror image copy from above as stitches 3–17. Then use the pattern repeat, as is, as stitches 18–32.

End-to-End: Work 2 identical strips of Liesel. Then either graft the lace portions together, or knit 2 rows of garter stitch on each and graft those garter stitch portions together.



- k* knit
- k2tog* knit 2 stitches together
- p* purl
- RS* right side
- s2kpo* Centered double decrease: Slip 2 stitches knitwise (as if to knit) one at a time from the left needle to the right needle, knit 1, pass slipped stitches over.
- ssk* Slip, slip, knit: Slip 2 stitches knitwise (as if to knit) one at a time from the left needle to the right needle, insert left needle through the second stitch and then the first stitch, knit through the back loops.
- st(s)* stitch(es)
- WS* wrong side
- yo* yarnover